

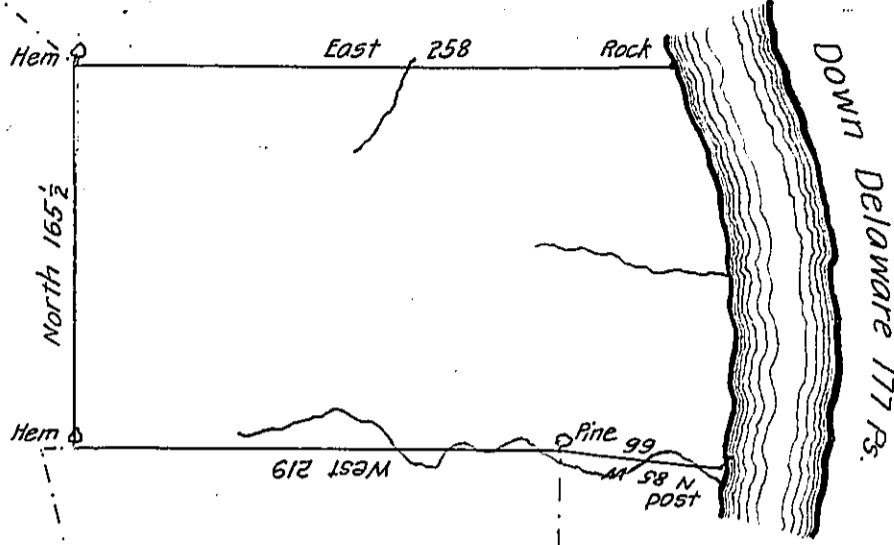
Bearing & distance
down the River are

1.5 28 E 44
2.5 6 E 96
3.5 6 W 37
177

Land said to be surveyed for
And^w Allen

B. 8-129

C-219-87
Vacant Land



A-10-177
Aaron Thomas

By Virtue of a Warrant dated the 13th July 1784 Surveyed the 22^d
November 1785 to James Musgrove the above described tract of land Situate a
little below Coshichlunk falls and near the South branch of Corkings Creek in
the County of Northampton containing Two hundred and Seventy-four acres
one hundred and thirty perches and the allowance of Six P. Cent &c^a

P—

Geo. Palmer D.S.

To Samuel Cochran Esquire

Surveyor General

(Now Wayne County)

IN TESTIMONY that the above is a copy of the original remaining on file in
the Department of Internal Affairs of Pennsylvania, made
conformably to an Act of Assembly approved the 16th day of
February, 1833, I have hereunto set my Hand and caused
the Seal of said Department to be affixed at Harrisburg,
this twenty eighth day of December 1905

George B. Brown
Secretary of Internal Affairs.